

# Rocktech Displays Limited



Module P/N: RK024HH261

Version: 1.0

Description : 2.4 inch TFT 240\*320 Pixels With  
LED backlight, All viewing angle,  
250 nits brightness

TEL: 0086-755-26065260

Fax: 0086-755-26065261

E-mail: [Sales@rocktech.com.hk](mailto:Sales@rocktech.com.hk)

Web: [www.rocktech.com.hk](http://www.rocktech.com.hk)

**Revision History**

<b>Date</b>	<b>Rev.</b>	<b>Page</b>	<b>Description</b>
<b>2017-04-10</b>	<b>1.0</b>	<b>All</b>	<b>First issue</b>

# CONTENTS

- GENERAL FEATURES
- ABSOLUTE MAXIMUM RATINGS
- ELECTRICAL SPECIFICATIONS
- OPTICAL SPECIFICATIONS
- BLOCK DIAGRAM
- PIN DESCRIPTION
- TIMING CHARACTERISTICS
- OUTLINE DIMENSION
- RELIABILITY AND INSPECTION STANDARD
- PRECAUTIONS

**1. General Features**

<b>Item</b>	<b>Spec</b>	<b>Remark</b>
Display Mode	Normally Black transmissive	
Viewing Direction	Free	IPS
Input Signals	CPU 8 bits	
Outline Dimensions	42.72(W) x60.26(H) x2.25(D)	
Active Area	36.72mm(W)×48.96mm(H)	
Number of Pixels	240(RGB)×320	
Dot Pitch	0.153mm(W) ×0.153mm(H)	
Pixel Arrangement	RGB Vertical stripes	
TFT Drive IC	ILI9341V	

## 2. Absolute Maximum Ratings

The following are maximum values which, if exceeded may cause operation or damage to the unit.

ITEM	Sym.	Min.	Typ.	Max.	Unit	Remark
Power for Circuit Driving	VDD	-0.3	-	4.6	V	
Power for Circuit Logic	Vt	-0.3	-	VDD+0.3	V	
Storage Humidity	H <sub>ST</sub>	10	-		%RH	At 25±5°C
Storage Temperature	T <sub>ST</sub>	-30	-	80	°C	
Operating Humidity	H <sub>OP</sub>	10	-		%RH	
Operating temperature	T <sub>OP</sub>	-20	-	70	°C	

### 3. Electrical Specification

#### 3.1 Driving TFT LCD Panel

Item	Sym.	Min	Typ.	Max	Unit	Note	
Power for Circuit Driving	VDD	2.5	2.8	3.3	V		
Power for Circuit Logic	IOVCC	1.65	1.8	3.3	V		
Logic Input Voltage	Low Voltage	V <sub>IL</sub>	-0.3	-	0.2VDD	V	
	High Voltage	V <sub>IH</sub>	0.8VDD	-	VDD	V	
Logic Output Voltage	Low Voltage	V <sub>OL</sub>	0	-	0.2VDD	V	
	High Voltage	V <sub>OH</sub>	0.8VDD	-	-	V	

#### 3.2 Driving Backlight

Item	Sym.	Min	Typ.	Max	Unit	Note
Backlight driving voltage	V <sub>F</sub>	-	3.2	-	V	
Backlight driving current	I <sub>F</sub>	40	60	80	mA	
Backlight Power Consumption	W <sub>BL</sub>	-	192	-	mW	
Life Time	-	-	50,000	-		Note 3

Note 1: (Unless specified, the ambient temperature  $T_a=25^{\circ}\text{C}$ )

Note 2: The recommended operating conditions refer to a range in which operation of this product is guaranteed. Should this range is exceeded, the operation cannot be guaranteed even if the values may be without the absolute maximum ratings.

Note 3: If LED is driven by high current, high ambient temperature & humidity condition. The life time of LED will be reduced. Operating life means brightness goes down to 50% initial brightness. Typical operating life time is estimated data.

## 4. Optical Specifications

Optical characteristics are determined after the unit has been 'ON' and stable for approximately 30 minutes in a dark environment at 25 °C. The values specified are at an approximate distance 500mm from the LCD surface at a viewing angle of  $\Phi$  and  $\theta$  equal to 0°.

Item	Sym.	Values			Unit	Note
		Min.	Typ.	Max.		
1) Contrast Ratio	C/R	350	500	-		FIG.1
2) Module Luminance	L	200	250	-	cd/m <sup>2</sup>	
3) Response time	Tr+Tf	-	25	40	ms	FIG.2
4) Viewing Angle	$\theta_T$	-	85	-	Degree	FIG.3
	$\theta_B$	-	85	-		
	$\theta_L$	-	85	-		
	$\theta_R$	-	85	-		
5) Chromaticity	Wx	0.279	0.319	0.359		
	Wy	0.293	0.333	0.373		
	Rx	-	-	-		
	Ry	-	-	-		
	Gx	-	-	-		
	Gy	-	-	-		
	Bx	-	-	-		
	By	-	-	-		

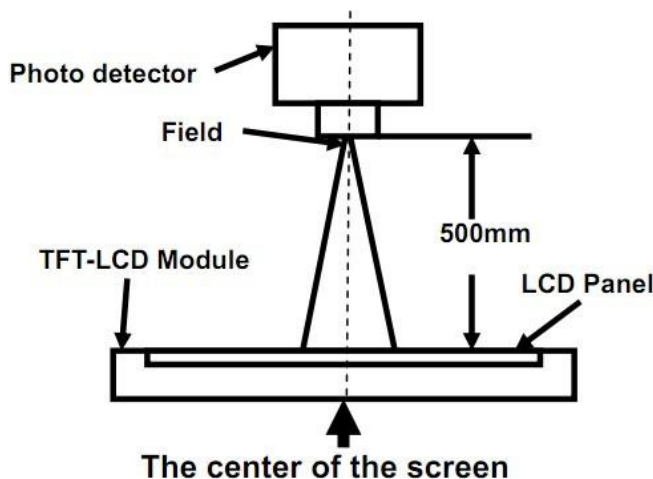
## ◆ Measurement System

Notes:

1. Contrast Ratio(CR) is defined mathematically as :  

$$\text{Contrast Ratio} = \frac{\text{Surface Luminance with all white pixels}}{\text{Surface Luminance with all black pixels}}$$
2. Surface luminance is the center point across the LCD surface 500mm from the surface with all pixels displaying white. For more information see FIG 1.
3. Response time is the time required for the display to transition from white to black (Rising Time, Tr) and from black to white (Falling Time, Tf). For additional information see FIG 2.
4. Viewing angle is the angle at which the contrast ratio is greater than 10. The angles are determined for the horizontal or x axis and the vertical or y axis with respect to the z axis which is normal to the LCD surface. For more information see FIG 3.

**FIG. 1 Optical Characteristic Measurement Equipment and Method**



Item	Photo detector	Field
Contrast Ratio	SR-3A	1°
Luminance		
Chromaticity		
Lum Uniformity		
Response Time	BM-7A	2°

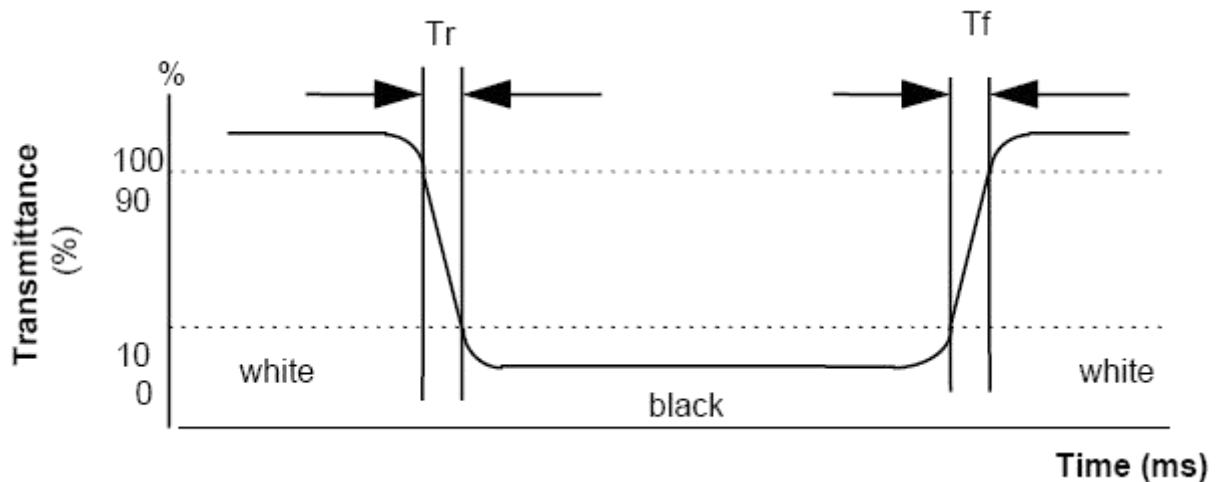


**FIG. 2 The definition of Response Time**

The response time is defined as the following figure and shall be measured by switching the input signal for “black” and “white”.

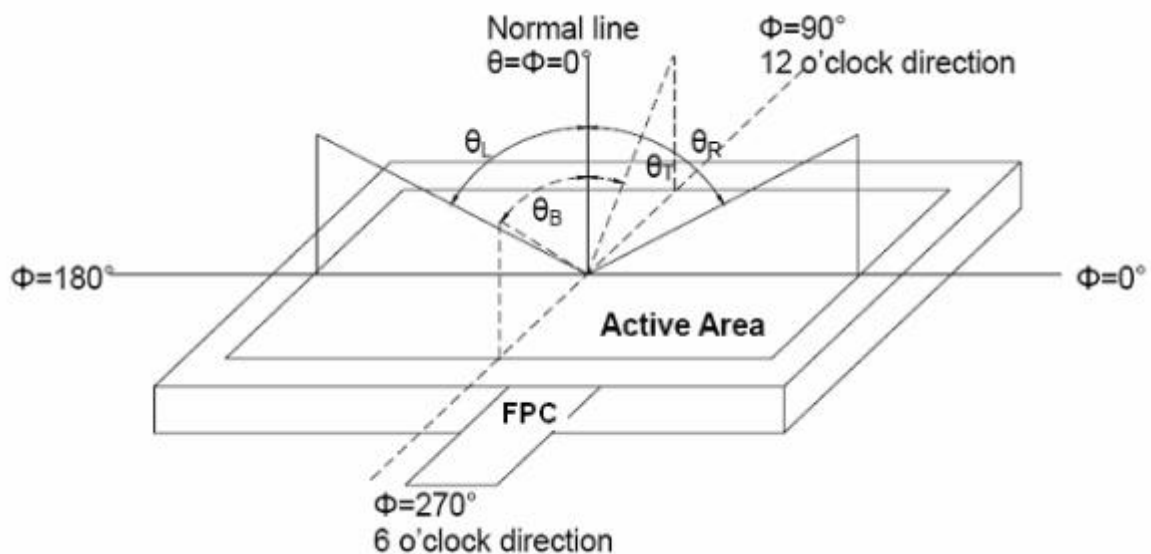
Response Time = Rising Time( $T_r$ ) + Falling Time( $T_f$ )

- Rising Time( $T_r$ ) : Full White 90% → Full White 10% Transmittance.
- Falling Time( $T_f$ ) : Full White 10% → Full White 90% Transmittance.

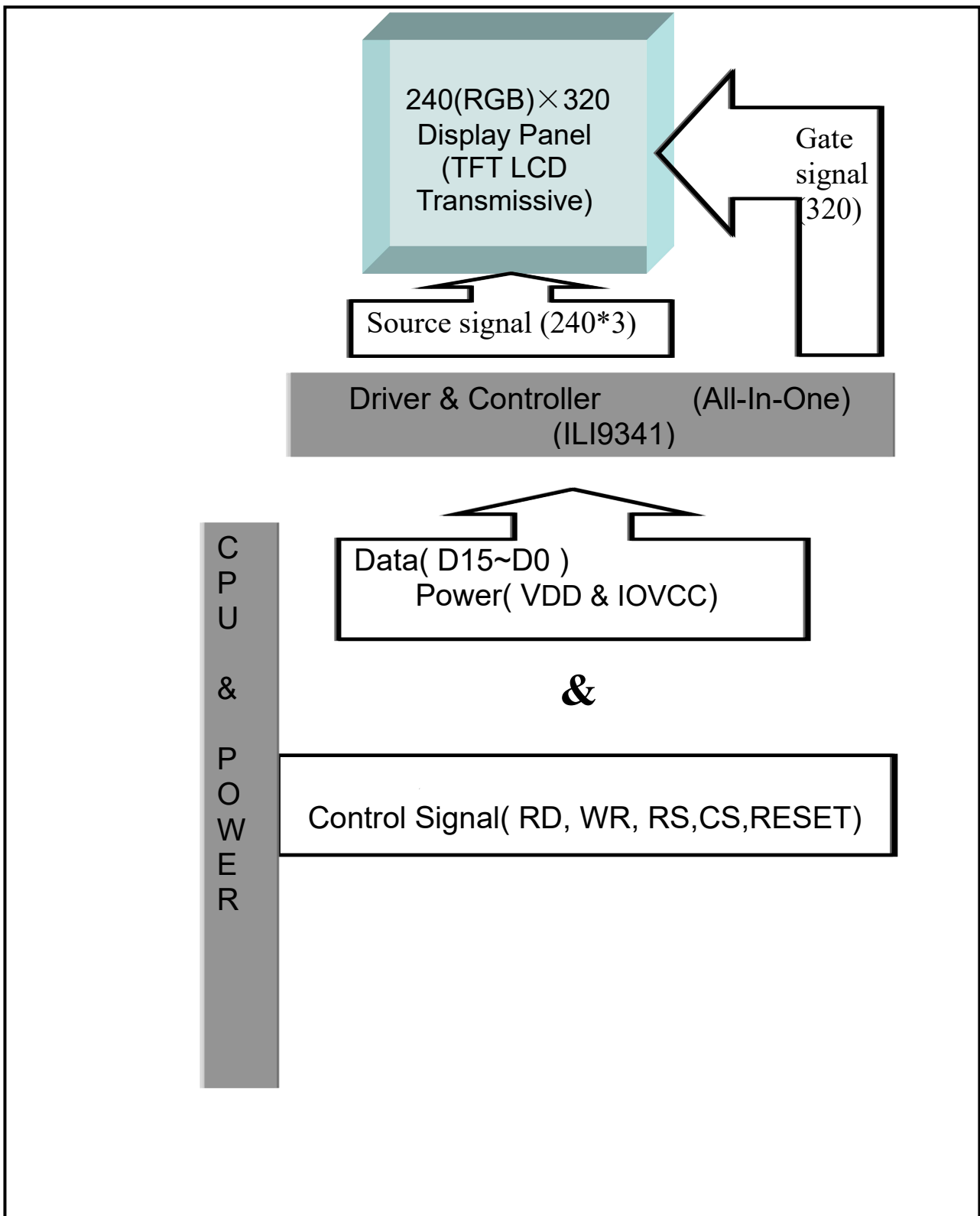


**FIG. 3 The definition of Viewing Angle**

Use Fig. 1(Test Procedure) under Measurement System to measure the contrast from the measuring direction specified by the conditions as the following figure.



## 5. Block Diagram



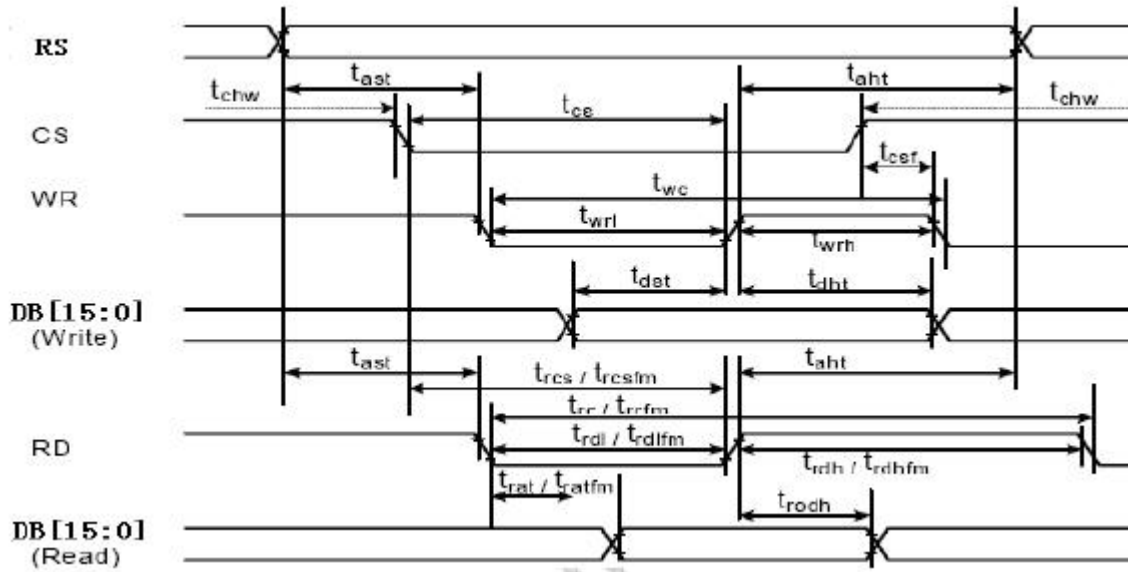
## 6.Pin Description

### 6.1 TFT LCD Pin Description

Item	Terminal	Functions
1	K1(-)	LED backLight Cathode
2	K2(-)	LED backLight Cathode
3	IOVCC	Power Supply of Logic
4	A+	LED backLight Anode
5	/WR	Write enables signal
6	DB0	Data Input
7	GND	Power Ground
8	DB2	Data Input
9	DB4	Data Input
10	DB6	Data Input
11	/CS	Chip select signal
12	/RESET	Reset signal
13	TE	Tearing effect output pin to synchronize MPU to frame writing, activated by S/W command
14	DB7	Data Input
15	DB5	Data Input
16	GND	Power Ground
17	DB3	Data Input
18	DB1	Data Input
19	DC	Register select signal
20	RD	Read enables signal
21	GND	Power Ground
22	VDD	Power Supply of Analog
23	K3(-)	LED backLight Cathode
24	K4(-)	LED backLight Cathode

## 7. Timing Characteristics

### 7.1. Interface Characteristics

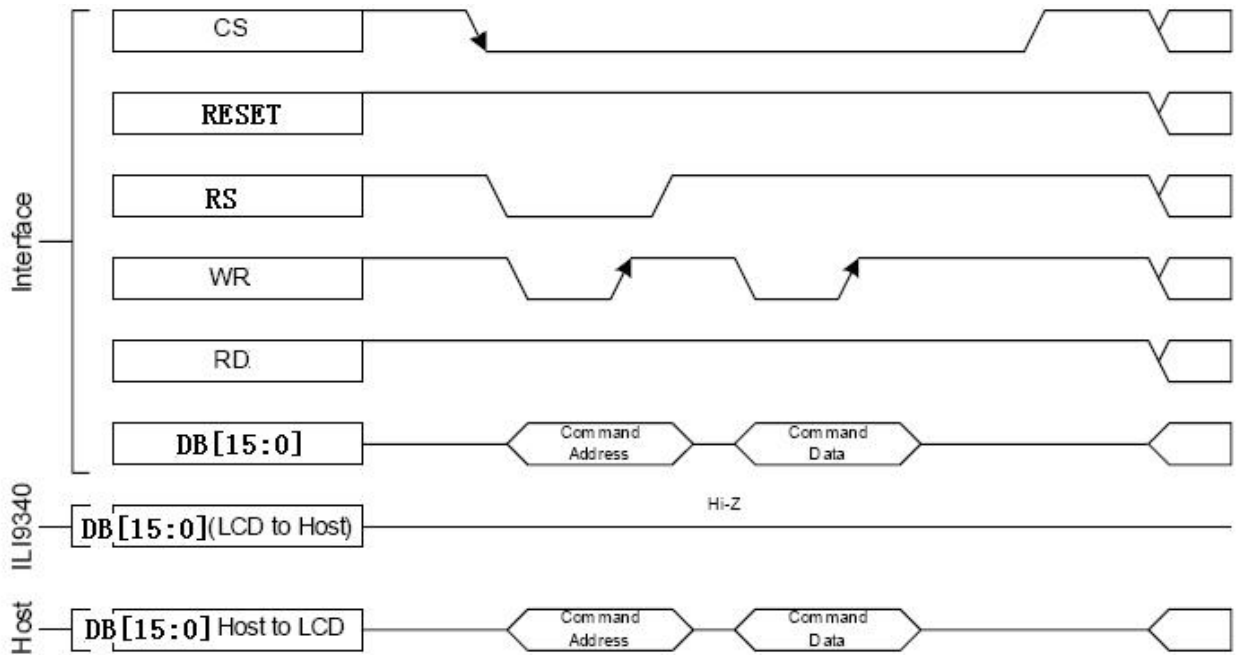


### 7.2 Timing Parameter

Signal	Symbol	Parameter	min	max	Unit	Description
RS	tast	Address setup time	0	-	ns	
	taht	Address hold time (Write/Read)	10	-	ns	
CS	tchw	CSX "H" pulse width	0	-	ns	
	tcs	Chip Select setup time (Write)	15	-	ns	
	trcs	Chip Select setup time (Read ID)	45	-	ns	
	trcsfm	Chip Select setup time (Read FM)	355	-	ns	
	tcsf	Chip Select Wait time (Write/Read)	10	-	ns	
WR	twc	Write cycle	66	-	ns	
	twrh	Write Control pulse H duration	15	-	ns	
	twrl	Write Control pulse L duration	15	-	ns	
RD (FM)	trcfm	Read Cycle (FM)	450	-	ns	
	trdhfm	Read Control H duration (FM)	90	-	ns	
	trdlfm	Read Control L duration (FM)	355	-	ns	
RD (ID)	trc	Read cycle (ID)	160	-	ns	
	trdh	Read Control pulse H duration	90	-	ns	
	trdl	Read Control pulse L duration	45	-	ns	
DB [15:0] DB [15:8]	tdst	Write data setup time	10	-	ns	For maximum CL=30pF For minimum CL=8pF
	tdht	Write data hold time	10	-	ns	
	trat	Read access time	-	40	ns	
	tratfm	Read access time	-	340	ns	
	trod	Read output disable time	20	80	ns	

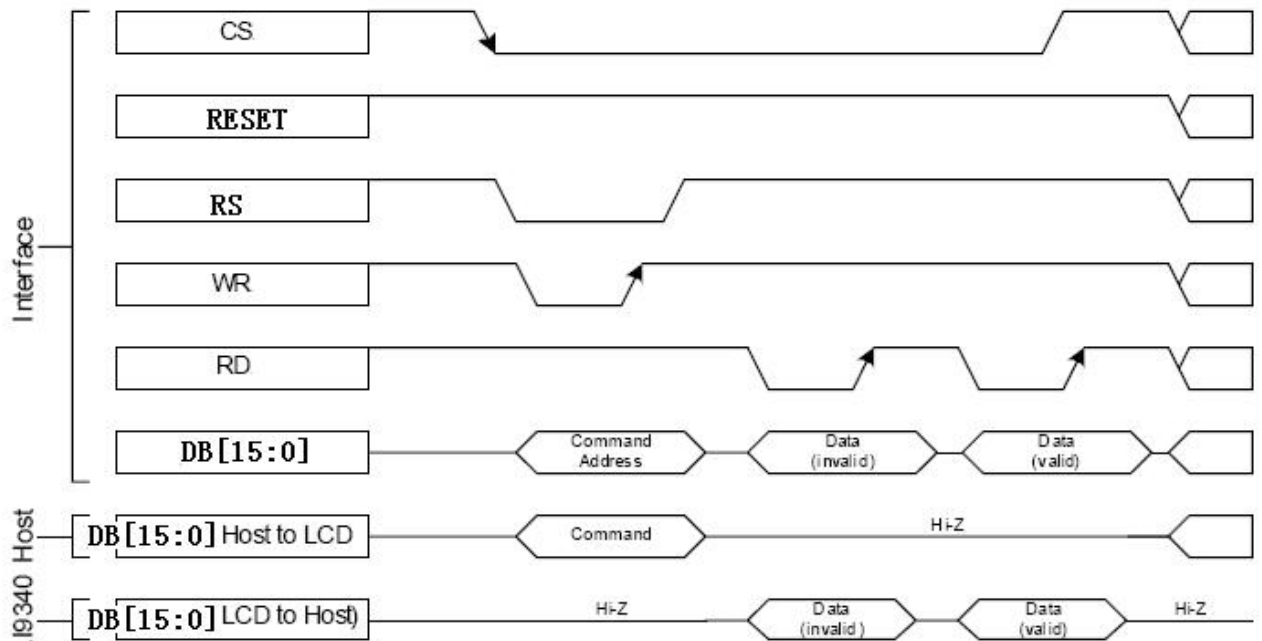
## 7.3 Register Write/Read Timing Parameter

### a. Write to Register



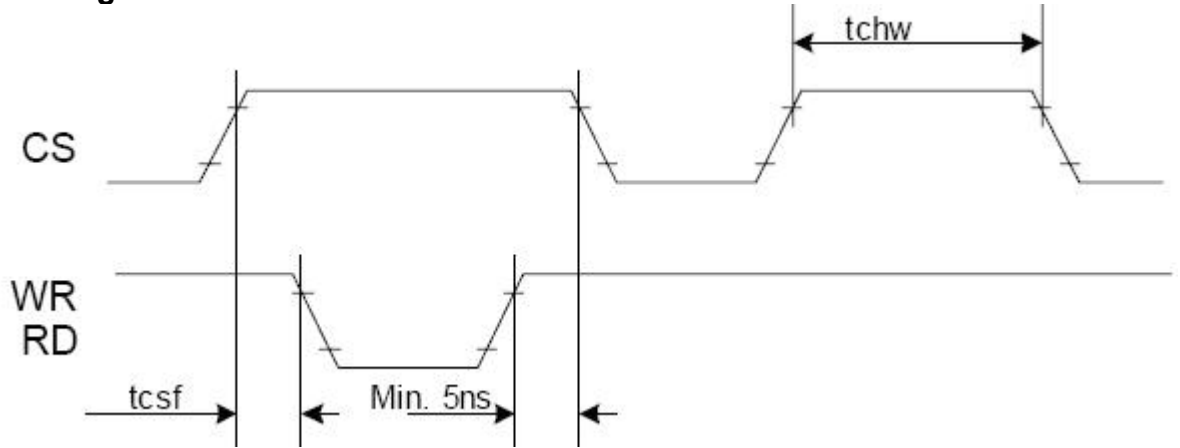
Register write timing in parallel bus system interface

### b. Read to Register

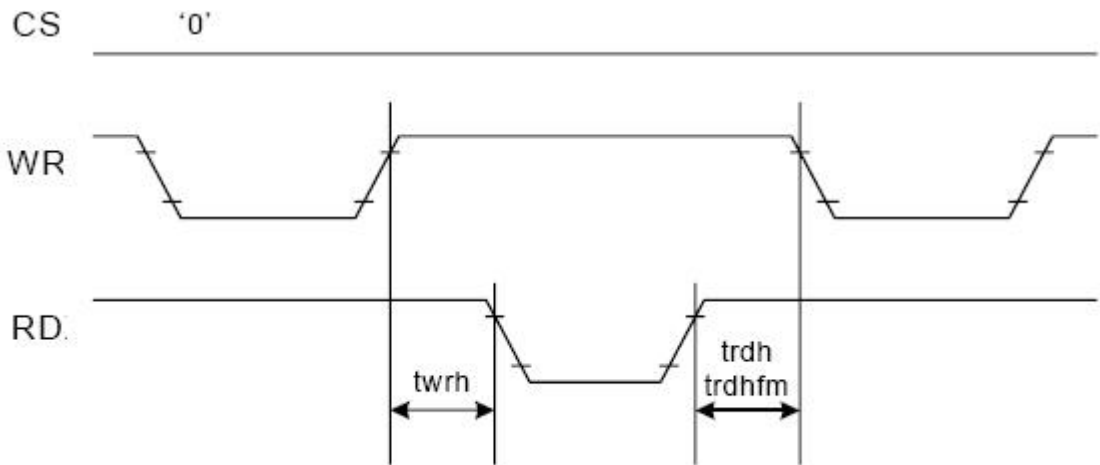


Register read timing in parallel bus system interface

## 7.4 CS timings

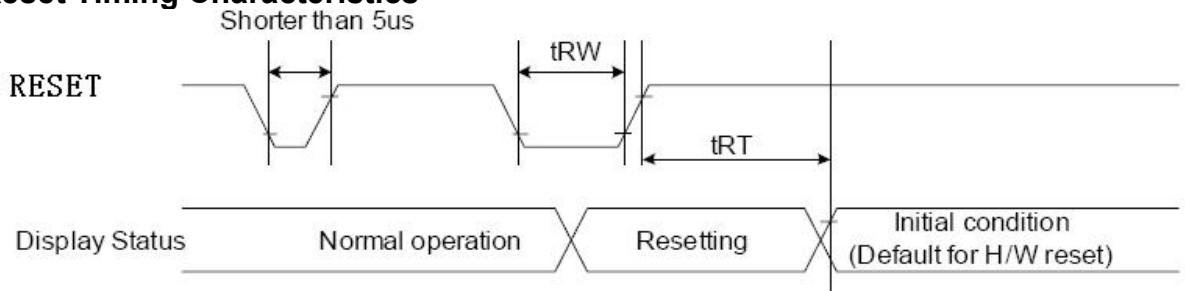


Chip selection timing



Write-to-read and read-to-write timing

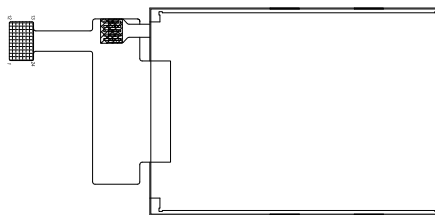
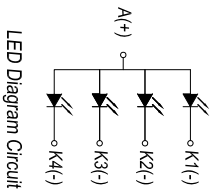
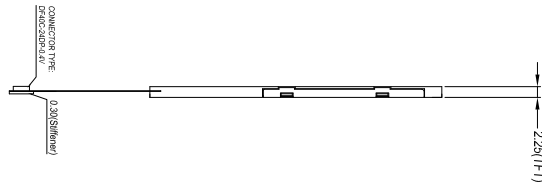
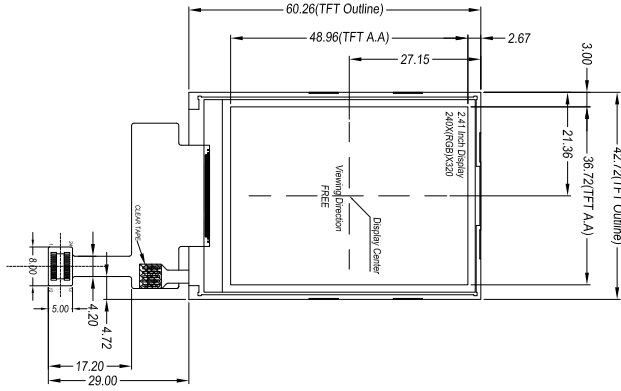
## 7.5 Reset Timing Characteristics



Signal	Symbol	Parameter	Min	Max	Unit
RESET	$t_{RW}$	Reset pulse duration	10		$\mu$ S
	$t_{RT}$	Reset cancel		5 (note 1,5)	mS
				120 (note 1,6,7)	mS

## 8.Outline Dimension

Display Type	Transmissive Normally Black
Display Resolution	240(RGB)X320
Viewing Angle	FREE
LCD Controller/Driver	IL9341V(TFT)
LCD Driving Voltage	3.3V
Operation Temperature	-20°C TO 70°C
Storage Temperature	-30°C TO 80°C
Backlight Speciality	4PCS LEDs
Remark	All materials in the drawing comply with the ROHS



TFT ASSIGNMENT:

1	K1(-)
2	K2(-)
3	IO/CC
4	AV
5	AV
6	FBSD
7	GND
8	DB2
9	DB4
10	DB5
11	DB5
12	FBSD
13	AV
14	FBSD
15	DB5
16	GND
17	DB3
18	DB1
19	DB1
20	DB5
21	GND
22	VDD
23	K3(-)
24	K4(-)

ISSUE	MODIFY DESCRIPTION	DATE
1.0	First Issue	2016.11.08
2.0	Modify FPC Interface	2016.12.07

TITLE:	LCM Outline		
PROJECT NO.:	RK024HH261		
DESCRIPTION:	2.41 Inch TFT		
GENERAL TOLERANCE:	±0.2		
<b>Rocktech Displays Limited</b>			
THIRD ANGLE PROJECTION			
	NAME	SGN	DATE
DRAWN	Marvin Zhou		2016.12.07
CHECKED	Marvin Zhou		2016.12.07
REV: 2.0	UNIT: MM	SCALE: 1/1	SHEET: 1 OF 1

## 9. Reliability and Inspection Standard

No.	Test Item	Test Conditions	Remark	
1	High Temperature	Storage	80°C, 120Hr	Note
		Operation	70°C, 120Hr	Note
2	Low Temperature	Storage	-30°C, 120Hr	Note
		Operation	-20°C, 120Hr	
3	High Temperature and High Humidity	40°C, 90%RH, 120Hr	Note	
4	Thermal Cycling Test(No operation)	-20°C for 30min, 70°C for 30 min. 100 cycles. Then test at room temperature after 1 hour	Note	
5	Vibration Test(No operation)	Frequency :10~55 HZ; Stroke :1.5 mm;Sweep:10HZ~55HZ~10HZ; 2hours for each direction of X, Y, Z(6 hours for total)		
6	Package Drop Test	Height:60 cm, 1 corner, 3 edges, 6 surfaces		
7	Electro Static Discharge	±2KV, Human Body Mode, 100pF/1500Ω		

Note:

- 1) Sample quantity for each test item is 5~10pcs.
- 2) Note 4: Before cosmetic and function test, the product must have enough recovery time, at least 2 hours at room temperature.



## 10. PRECAUTIONS FOR USING LCD MODULES

### Handling Precautions

- (1) The display panel is made of glass and polarizer. As glass is fragile, it tends to become or chipped during handling especially on the edges. Please avoid dropping or jarring. Do not subject it to a mechanical shock by dropping it or impact.
- (2) If the display panel is damaged and the liquid crystal substance leaks out, be sure not to get any in your mouth. If the substance contacts your skin or clothes, wash it off using soap and water.
- (3) Do not apply excessive force to the display surface or the adjoining areas since this may cause the color tone to vary. Do not touch the display with bare hands. This will stain the display area and degraded insulation between terminals (some cosmetics are determined to the polarizer).
- (4) The polarizer covering the display surface of the LCD module is soft and easily scratched. Handle this polarizer carefully. Do not touch, push or rub the exposed polarizers with anything harder than an HB pencil lead (glass, tweezers, etc.). Do not put or attach anything on the display area to avoid leaving marks on. Condensation on the surface and contact with terminals due to cold will damage, stain or dirty the polarizer. After products are tested at low temperature they must be warmed up in a container before coming is contacting with room temperature air.
- (5) If the display surface becomes contaminated, breathe on the surface and gently wipe it with a soft dry cloth. If it is heavily contaminated, moisten cloth with one of the following solvents
  - Isopropyl alcohol
  - Ethyl alcoholDo not scrub hard to avoid damaging the display surface.
- (6) Solvents other than those above-mentioned may damage the polarizer. Especially, do not use the following.
  - Water
  - Ketone
  - Aromatic solventsWipe off saliva or water drops immediately, contact with water over a long period of time may cause deformation or color fading. Avoid contacting oil and fats.
- (7) Exercise care to minimize corrosion of the electrode. Corrosion of the electrodes is accelerated by water droplets, moisture condensation or a current flow in a high-humidity environment.
- (8) Install the LCD Module by using the mounting holes. When mounting the LCD module make sure it is free of twisting, warping and distortion. In particular, do not forcibly pull or bend the I/O cable or the backlight cable.
- (9) Do not attempt to disassemble or process the LCD module.
- (10) NC terminal should be open. Do not connect anything.
- (11) If the logic circuit power is off, do not apply the input signals.
- (12) Since LCM has been assembled and adjusted with a high degree of precision, avoid applying excessive shocks to the module or making any alterations or modifications to it.
  - Do not alter, modify or change the shape of the tab on the metal frame.
  - Do not make extra holes on the printed circuit board, modify its shape or change the positions of components to be attached.
  - Do not damage or modify the pattern writing on the printed circuit board.
  - Absolutely do not modify the zebra rubber strip (conductive rubber) or heat seal

connector.

- Except for soldering the interface, do not make any alterations or modifications with a soldering iron.
- Do not drop, bend or twist LCM.

## Storage Precautions

When storing the LCD modules, the following precaution is necessary.

- (1) Store them in a sealed polyethylene bag. If properly sealed, there is no need for the dessicant.
- (2) Store them in a dark place. Do not expose to sunlight or fluorescent light, keep the temperature between 0°C and 35°C.
- (3) The polarizer surface should not come in contact with any other objects. (We advise you to store them in the container in which they were shipped).

## Others

Liquid crystals solidify under low temperature (below the storage temperature range) leading to defective orientation or the generation of air bubbles (black or white). Air bubbles may also be generated if the module is subject to a low temperature.

If the LCD modules have been operating for a long time showing the same display patterns, the display patterns may remain on the screen as ghost images and a slight contrast irregularity may also appear. A normal operating status can be regained by suspending use for some time. It should be noted that this phenomenon does not adversely affect performance reliability.

To minimize the performance degradation of the LCD modules resulting from destruction caused by static electricity etc., exercise care to avoid holding the following sections when handling the modules.

- Exposed area of the printed circuit board.
- Terminal electrode sections.